

NORTH PHOTONICS

[OEDLS-200]

Pulsed Diode Laser Sources

Features:

- Pulsed or CW mode
- Stand-alone or computer controlled
- Wide wavelength range
- High beam quality

Applications:

- Range finding
- Surveying equipment
- Security scanners
- Medical
- Test & measurement systems



OEDLS-200

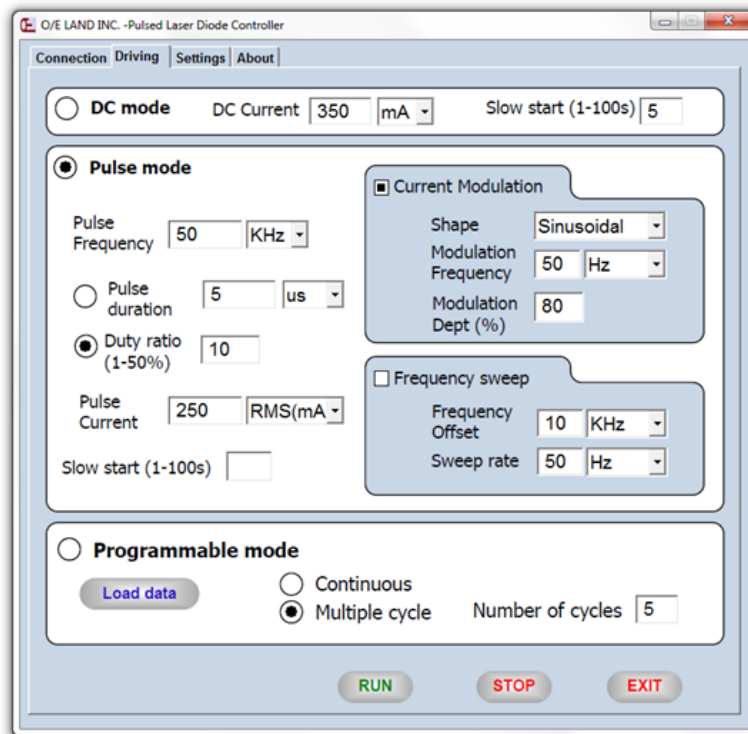
Product description:

Pulsed Diode Laser Source is a turn-key solution targeting customers looking for low cost pulsed lasers for various applications. Diode lasers are available in a wide range from 400 nm to 3 μ m. The pulsed laser parameters such as pulse frequency, pulse duration and duty cycle is controlled by a computer in a user-friendly interface through the USB port.

Parameter	Unit	OEDLS-200
Operating Wavelength	m	400 n – 3 μ
Minimum Pulse width	ns	5
Pulse rate	MHz	Up to 10
Average output power	W	< 1
Output port	-	Free space or fiber pigtailed
Operating temperature	$^{\circ}$ C	10-50
Dimensions	mm	70 x 190 x 310

NORTH PHOTONICS

Interface:



- All specifications are subject to change without notice.

Ordering number:

OEDLS-200-WL-P:	WL	P
	400 n – 3 μm	Average power (mW)
Example:	OEDLS-200-633-20	